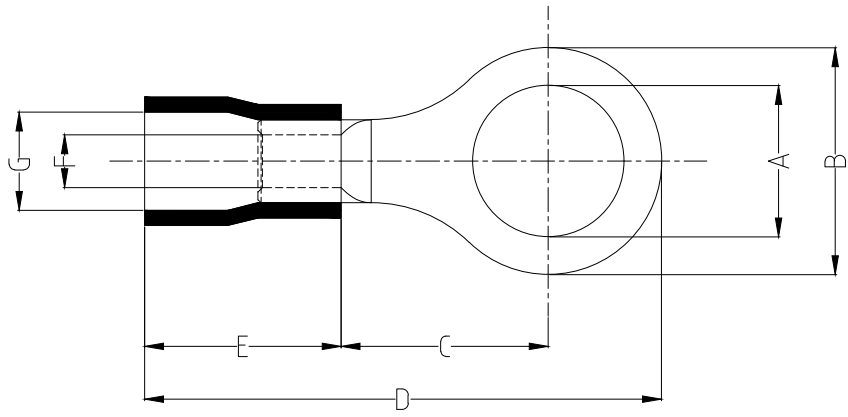
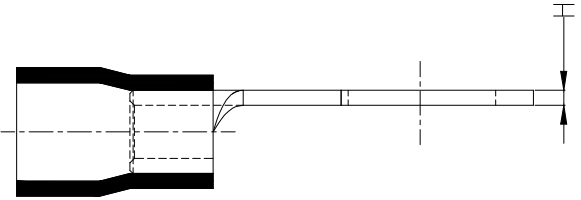


1 2 3 4 5 6 7 8

REV	LOCATIONS	DESCRIPTION	DATE	REVISER	APPD

Notes:

Material: Copper
 Insulator: PVC (UL 94V-0)
 Plating: Matte tin plated
 Wire range: 4~6mm² / (12~10AWG)
 Applicable screw: #10 UNC
 Temperature Range-Operating: 0°C~75°C
 Maximum electrical rating: 600V
 Max current: 48A



Dimensions							
A	B	C	D	E	F	G	H
±0.3	±0.5	±1	±1	±1	±0.5	±0.5	±0.05
5.3	9.5	8.3	26.6	13.5	3.4	6.3	1.0

PART NO.	Color Of Insulator
FRT02-005500500ARD2	Red
FRT02-005500500ABU2	Blue
FRT02-005500500ABK2	Black
FRT02-005500500AYE2	Yellow

 THIRD ANGLE PROJECTION	GENERAL TOLERANCES (UNLESS SPECIFIED)		APPROVE BY	DATE	
	X. ±0.30	X.* ±5'	LEO	09/JAN/21	
	DESIGN UNITS mm		CHECKED BY	DATE	
	X.X ±0.20	X.X' ±2'	GISELLE	09/JAN/21	
SCALE	SIZE	X.XX ±0.15	X.XX' ±1'	DRAWN BY	DATE
5:1	A4	X.XXX ±0.10	X.XXX' ±0.5'	PYD	09/JAN/21

PART NO.	ITEM NO.	 Building Technology Cornerstone
FRT02-005500500AXX2	FRT02	
TITLE		REV 0
Ring tongue terminal		SHEET NO. 1/1
THIS DRAWING CONTAINS INFORMATION THAT IS PROPRIETARY TO TXGA INDUSTRIAL ELECTRONICS(S.Z)CO.,LTD AND SHOULD NOT BE USED WITHOUT WRITTEN PERMISSION		

1 2 3 4 5 6 7 8